

A black and white portrait of a man with a shaved head and a serious expression. He is wearing small hoop earrings and a large, metallic, reflective chest piece that covers his chest and neck area. The background is a plain, light color.

True

**PRINCE
G**

True

188CM/90CM/72CM/92CM 44 Black/Brown



PRINCE
G

True

188CM/90CM/72CM/92CM 44 Black/Brown



PRINCE G

True

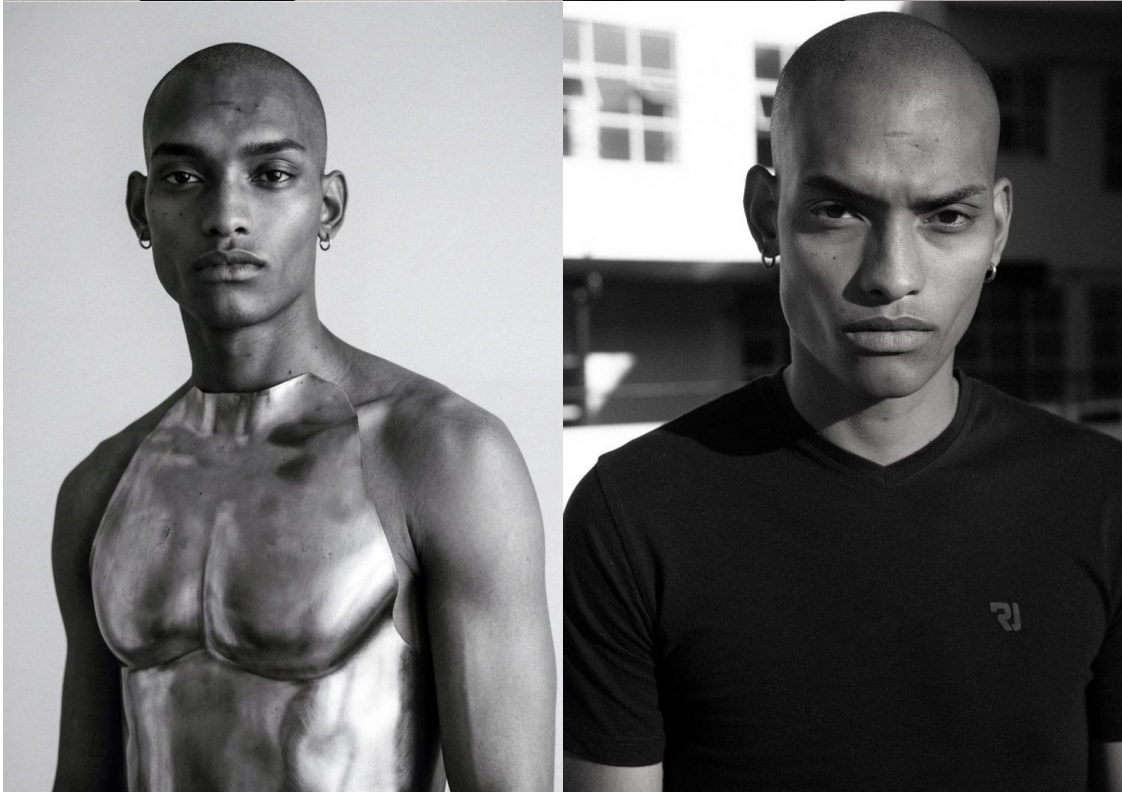
188CM/90CM/72CM/92CM 44 Black/Brown



**PRINCE
G**

True

188CM/90CM/72CM/92CM 44 Black/Brown



**PRINCE
G**

True

188CM/90CM/72CM/92CM 44 Black/Brown



**PRINCE
G**

True

188CM/90CM/72CM/92CM 44 Black/Brown



GIORGIO ARMANI

PRINCE G

True

188CM/90CM/72CM/92CM 44 Black/Brown



PRINCE
G